

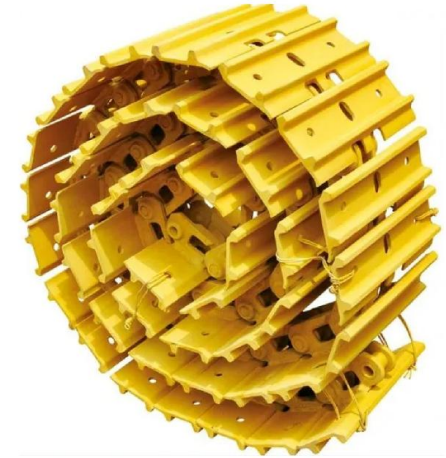
# Track Shoe Ass'y

195-32-04642



## Main specification parameter for Track Chain

Brand	Model	Product Name	Part Number	Weight
Komatsu	D375A	Track Shoe Ass'y	195-32-04642	4305 Kg



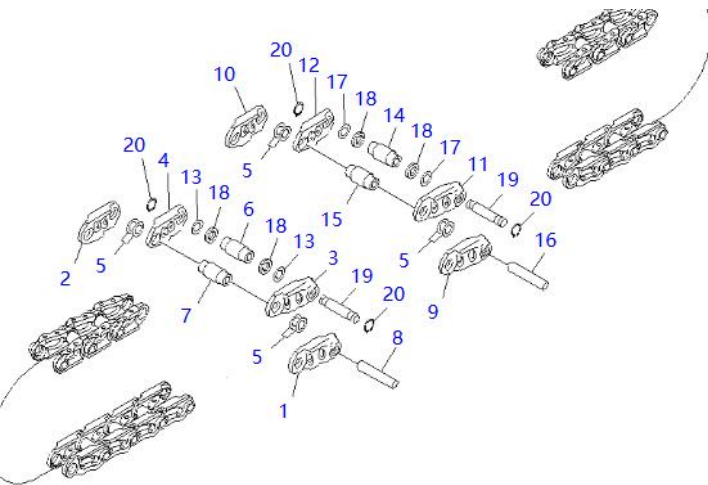
## Compatible Equipment Models: D375A

We are committed to providing a variety of parts including bulldozers, excavators and wheel loaders for well-known brands such as Carter and Komatsu. Our product line covers a full range of OEM parts, such as Track Chain, Track Rollers, Sprocket, Excavator Buckets, Blades, Excavator Cylinders, Swing Circles, and various electrical and hydraulic components to ensure that our customers' stringent requirements for quality and performance are met.



Stone (Shanghai) Engineering Machinery Co., Ltd. is a leading supplier of engineering machinery parts, focusing on providing high-quality parts for mining companies. Since its establishment in 2004, we have been based in Shanghai, China, and have built our own brand STONE, becoming a trusted choice in the industry.

## Product Detail



Product Name	Track Shoe Ass'y
Part Number	195-32-04642
Origin	Japan
Brand Name	STONE
Model	D375A
Price	Negotiable
Packing Details	Standard Export Packing
Delivery Time	0-30 Days
Payment Term	L/C, T/T
Price Term	FOB, CIF, CFR
Supply Capacity	50,000 PCS/Month
Minimum Order Quantity	1 PC
Material	High Quality Steel
Technology	Precision Machining
Surface	Treatment Anti-Corrosion Coating
Hardness	HRC 48-52
Quality	Original Factory Standard
After-Sales Service	Full Support, Online Service
Color	Customizable
Application	Bulldozer
Customizable	including customized materials, surface treatment and specifications



# STONE

## STONE Product Case Brochure

E-mail: [sale@shmpine.com](mailto:sale@shmpine.com)

Tel: +8613671661119 (Wechat/WhatsApp)

Address: Room JT18489, Building 4, Block B, No. 925 Yecheng Road, Jiading Industrial Zone, Shanghai



## About Us

---

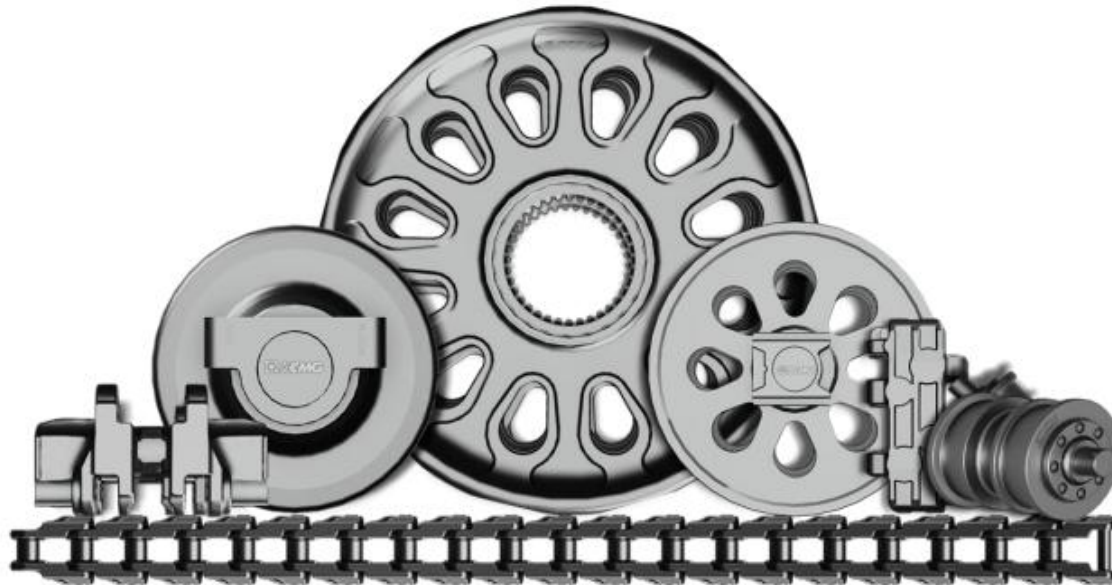
**STONE** was established in 2004 and is headquartered in Shanghai. We are a professional company focusing on mining equipment parts, providing customers with one-stop solutions for mining parts including R&D, supply and technical services. Our company has its own brand STONE and has established a professional R&D and service team of more than 30 people. Our core team has been deeply involved in the construction machinery industry for more than 21 years.

At STONE, we are committed to our mission:  
Building the World Together!

---

# Forward Design

We implement forward design and establish strict standards for raw materials, key components and process technology.



All series, All working conditions, All weather . Large-tonnage, Complete-set, Tailor-made

# 1000+ CRAWLER ASSEMBLY

We jointly develop special steel with well-known steel mills combined with induction quenching of the chain link tread and the inside and outside of pin bush, which significantly improve product wear resistance and adaptability to working conditions.



single rib plate crawler

double rib plate crawler

three rib plate crawler



cast plate crawler

whole crawler A

whole crawler B



wetland crawler

rubber plate crawler

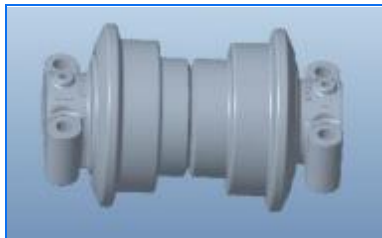
more products



All series, All working conditions, All weather . Large-tonnage, Complete-set, Tailor-made

# 500 + TRACK ROLLER

The wheel body that has undergone overall hardening treatment and the floating seal verified by limit tests ensure the reliability of products under harsh working conditions such as mining and heavy loads.



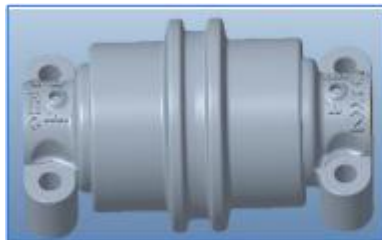
Type A



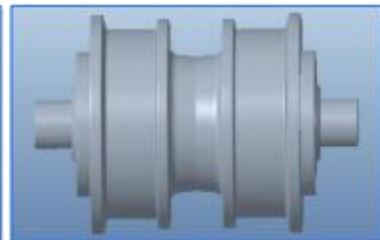
Type B



Type C



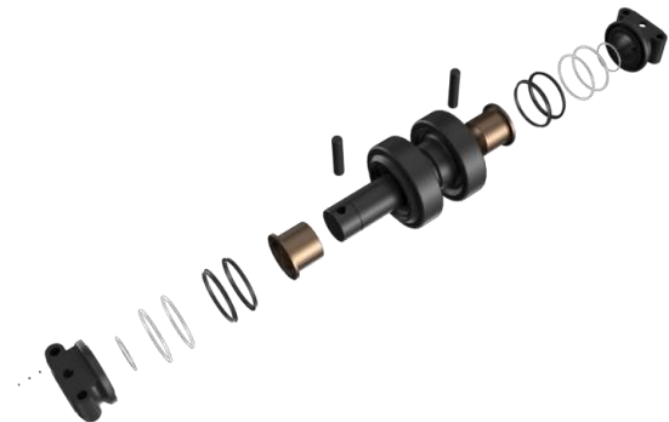
Type D



Type E



More products



All series, All working conditions, All weather . Large-tonnage, Complete-set, Tailor-made

# 400 + SPROCKET

Based on the host operating conditions, design conventional teeth, continuous teeth, staggered teeth and other driving structures, we develop high alloy structural materials and heat treatment processes, achieve high-temperature reinforcement and low-temperature toughening, significantly improve product strength and wear resistance.



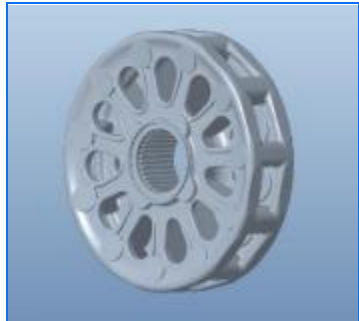
Type A



Type B



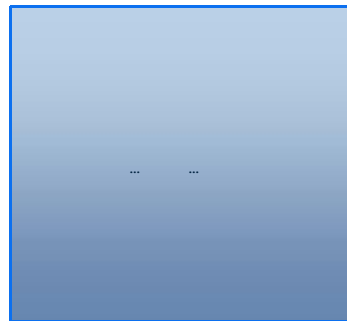
Type C



Type D



Type E



More products



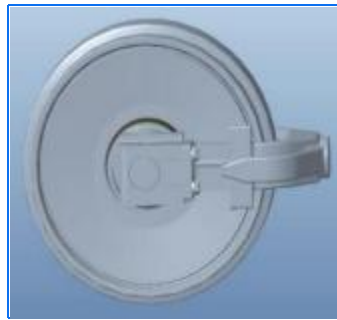
All series, All working conditions, All weather . Large-tonnage, Complete-set, Tailor-made

# 360 + IDLER

The wheel body is cast or forged as a whole, to have good fatigue resistance. At the same time, high-strength sliding bearings and sealing technology are used to improve the adaptability of products under extreme working conditions.



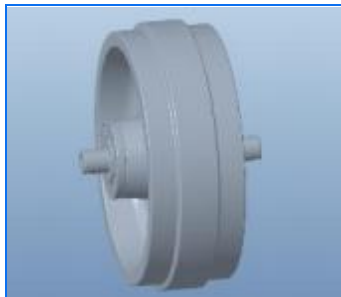
Type A



Type B



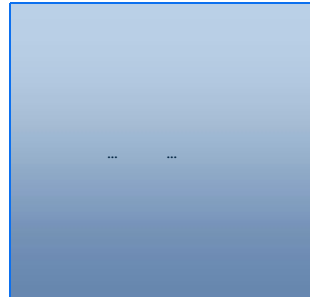
Type C



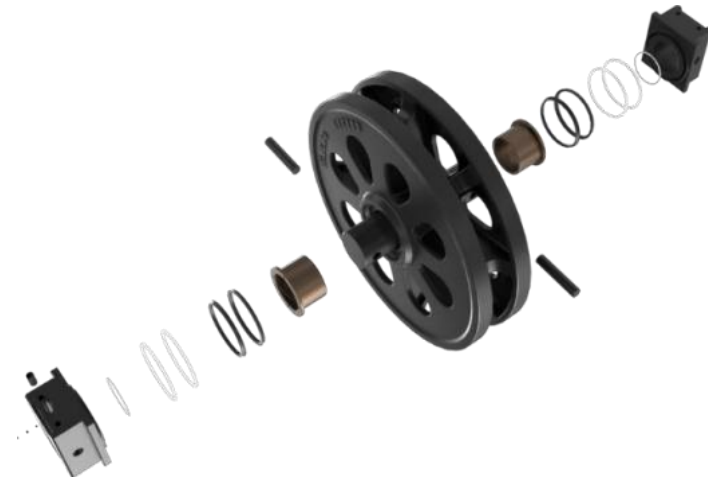
Type D



Type E



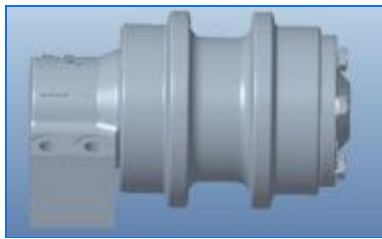
More products



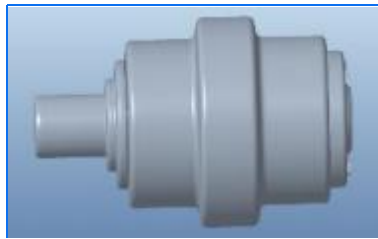
All series, All working conditions, All weather . Large-tonnage, Complete-set, Tailor-made

# 200 + CARRIER ROLLER

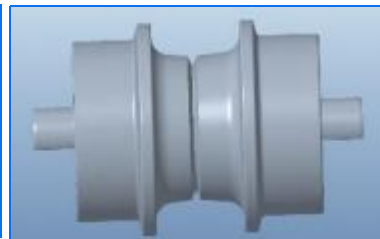
By applying anti-jamming and anti-loosening technology, advanced heat treatment technology, and a circulating structure of lubricating medium on the inner wall of the bearing, the service life of the carrier roller is greatly extended.



Type A



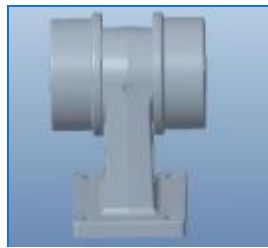
Type B



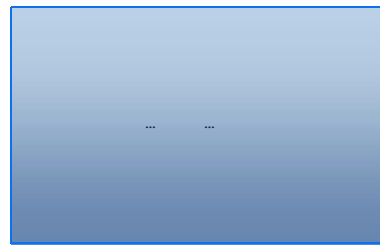
Type C



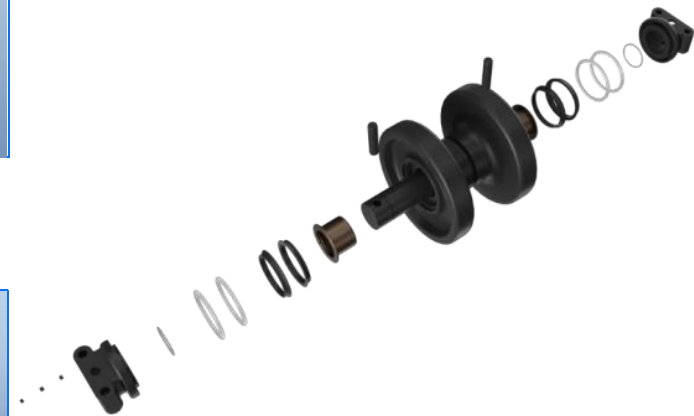
Type D



Type E



More products

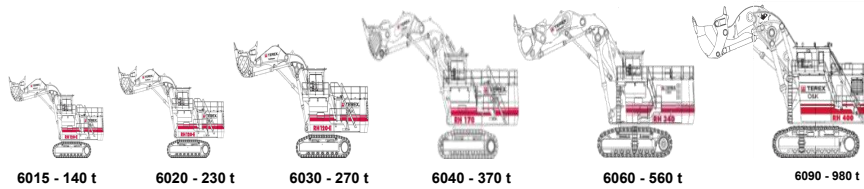


All series, All working conditions, All weather . Large-tonnage, Complete-set, Tailor-made

# Brand model Machines

Construction Class	< 100 Tonne
Mining Class	> 100 Tonne
Plate Lip	< 350 Tonne
Cast Lip	> 350 Tonne

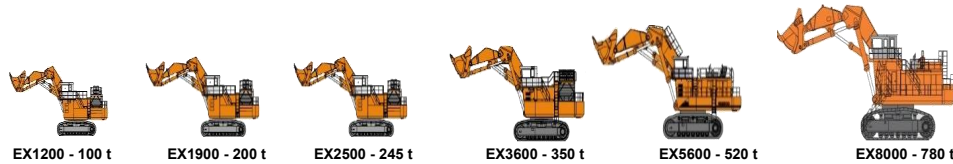
**CAT**  
HEX



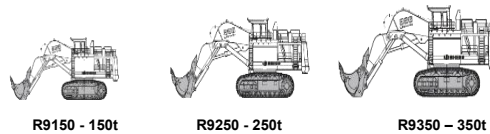
**KOMATSU**  
HEX



**HITACHI**  
HEX



**LIEBHERR**  
HEX



**XCMG**  
HEX



# Brand model Machines

## CAT bulldozer



D8/d8N/D8R



D9/D9N/D9R



D10/D10R/D10T



D11/D11N/D11R/D11T...

## KOMATSU bulldozer



D275



D355



D375



D475

## SHANTUI bulldozer



SD32



DH46



SD60



SD90

More Brand... ..  
More Models... ..

 CATERPILLAR®

**KOMATSU**

**SHANTUI**

**HITACHI**

 DOOSAN



**SANY**

 XCMG

**LIEBHERR**

**VOLVO**



**CATERPILLAR®**

# CAT Machines

6015 / 6020 / 6030 / 6040 / 6060 / 6090

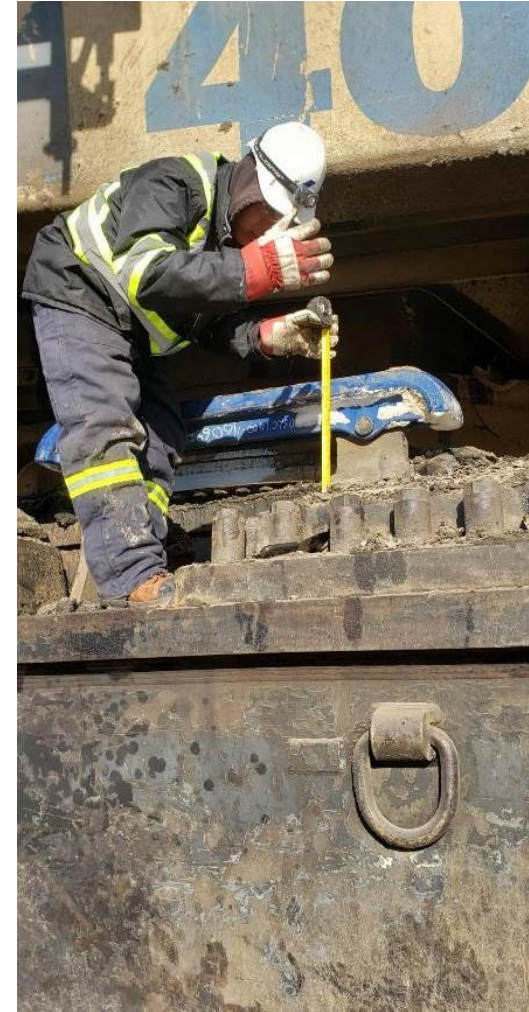
## Experience

Our products have been widely used in crawler machines, such as mining machinery, earthmoving machinery, piling machinery, pavement construction machinery, lifting machinery, and we have accumulated extensive market verification experience.



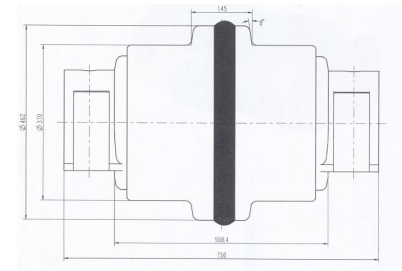
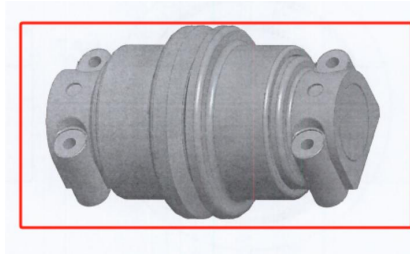
# CAT Machines

6015 / 6020 / 6030 / 6040 / 6060 / 6090



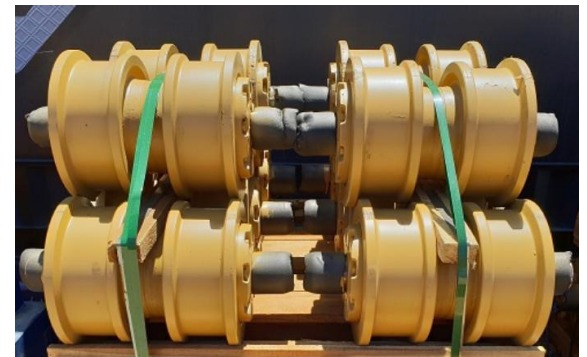
# CAT Machines

6015 / 6020 / 6030 / 6040 / 6060 / 6090



# CAT Machines

D8N / D9R / D10T / D11...



# CAT Machines

D8N / D9R / D10T / D11...

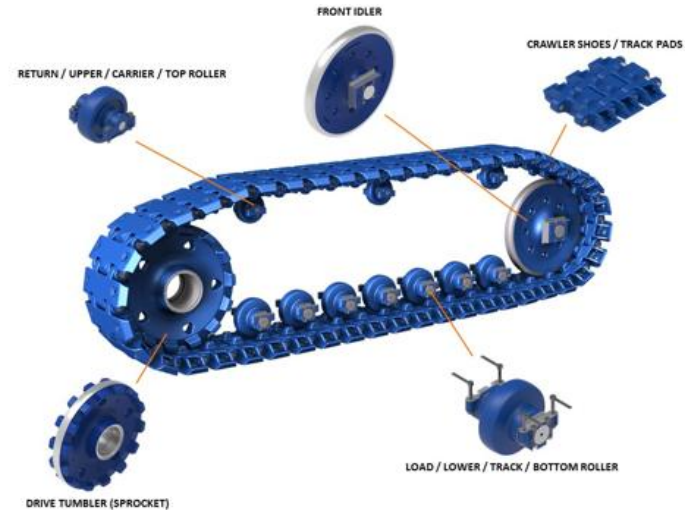




# KOMATSU

# Komatsu Machines

PC1250 / PC2000 / PC3000 / PC4000 / PC5500 / PC7000 / PC8000



## Accelerate Technology Iteration.

We apply a digital collaborative design and simulation analysis platform to analyze the load of the whole machine and provide customers with highly reliable products based on the applicable working conditions.

# Komatsu Machines

PC1250 / PC2000 / PC3000 / PC4000 / PC5500 / PC7000 / PC8000



# Komatsu Machines

PC1250 / PC2000 / PC3000 / PC4000 / PC5500 / PC7000 / PC8000



# Komatsu Machines

D155 / D275 / D355/ D375 / D475

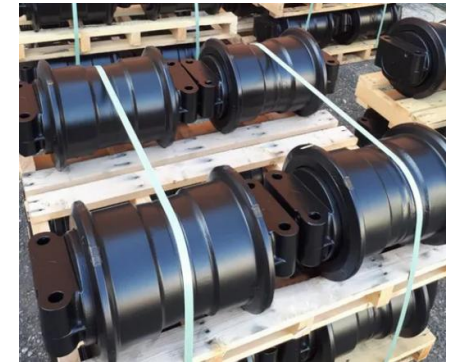




# HITACHI

# Hitachi Machines

EX1200 / EX1900 / EX2500 / EX3600 / EX5600 / EX8000



# Hitachi Machines

EX1200 / EX1900 / EX2500 / EX3600 / EX5600 / EX8000



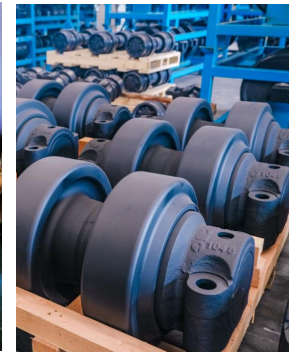
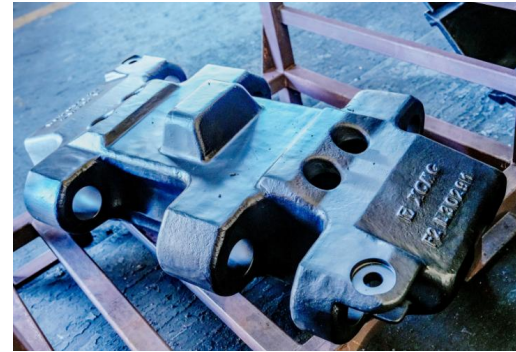
# Liebherr Machines

R9150 / R9250 / R9350



# XCMG Machines

XE1250 / XE1350 / XE2000 / XE4000 / XE5000 / XE7000



# SHANTUI Machines

SD32 / DH46 / SD60 / SD90





# Building the World Together!

E-mail:[sale@shmpine.com](mailto:sale@shmpine.com)

Tel:+8613671661119(Wechat/WhatsApp)

Address: Room JT18489, Building 4, Block B, No. 925 Yecheng Road, Jiading Industrial Zone, Shanghai